

# SOYBEANS



**S04-K9** BRAND

RM:  
0.4

CHU:  
2625



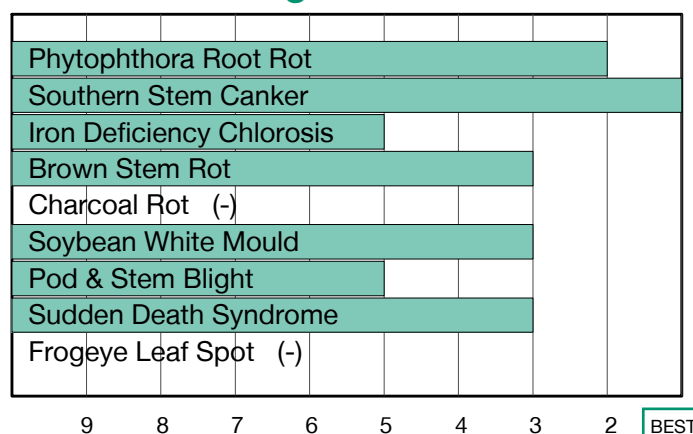
## Yellow Hilum with Very High Protein

- Soybean Cyst Nematode resistance in a food-grade variety
- Excellent Phytophthora Root Rot field tolerance with Rps1c gene
- Very good emergence and early season vigour providing a strong start

## Plant Characteristics

Plant Height	<b>Medium</b>
Canopy Index	<b>4.95</b>
Branching	<b>Moderate</b>
Growth Habit	<b>Indeterminate</b>
Flower Colour	<b>Purple</b>
Pubescence Colour	<b>Gray</b>
Pod Colour	<b>Tan</b>
Hilum Colour	<b>Yellow</b>
Chloride Sensitivity	<b>Excluder</b>

## Disease Ratings



## Agronomic Traits

Emergence	<b>2</b>
Standability	<b>3</b>
Shatter Tolerance	<b>-</b>
Green Stem	<b>1</b>
Estimated Seed Size	<b>-</b>
Protein	<b>Ultra High</b>
Oil	<b>Average</b>
Narrow Rows	<b>1</b>
Wide Rows	<b>2</b>
Metribuzin Response	<b>Best</b>
Sulfentrazone Response	<b>Good</b>

## Adaptation to Soil Types

Drought Prone	<b>Good</b>
High pH*	<b>Poor</b>
Highly Productive	<b>Good</b>
Moderate/Variable Environments	<b>Good</b>
Poorly Drained	<b>Good</b>

## Diseases and Pests

Phytophthora Root Rot (PRR) Source	<b>Rps1c</b>
Soybean Cyst Nematode (SCN) Races	<b>R3, R14</b>
(SCN) Source	<b>PI88788</b>
Root Knot Nematode (RKN) Incognita	<b>-</b>

**For more information:** Visit [syngenta.ca](http://syngenta.ca), contact our Customer Interaction Centre at 87-SYNGENTA, or follow @NKSeedsCanada on Twitter.

1-9 Scale: 1 = Best, 9 = Worst, (-) = Not Available.  
Adaptation and Responses: Best > Good > Fair > Poor.

Protein and Oil: Ultra High > Very High > High > Average > Low.  
Canopy Index: Reflects plant height, width and branching. 1 = Smallest, 9 = Largest.

\* Represents an assessment of stand establishment, chlorosis severity and yield performance

Performance evaluations are based on field observations and public information. Data from multiple locations and years should be consulted whenever possible. Individual results may vary depending on local growing, soil and weather conditions. IMPORTANT: ALWAYS READ AND FOLLOW SEED BAG/TAG DIRECTIONS.

Trademarks and service marks are the property of their respective owners. © 2022 Syngenta.