

SOYBEANS



S20-L8X^{BRAND}

RM:
2.0

CHU:
3025



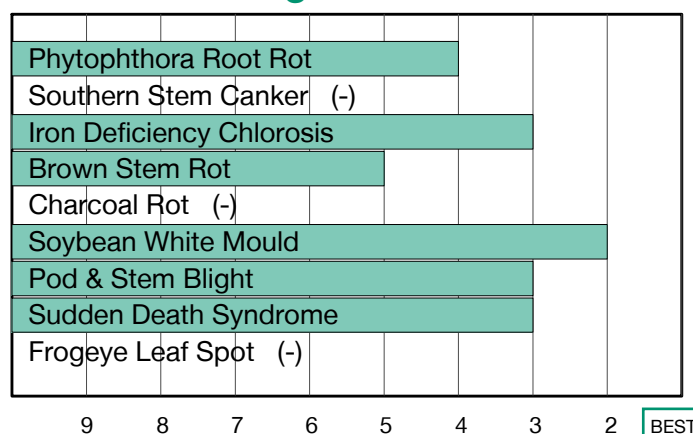
Outstanding Stress Tolerance with High Yield Potential

- Excellent Sudden Death Syndrome and Soybean White Mould tolerance
- Fast emergence under tough soil conditions
- Excels in lower yielding environments

Plant Characteristics

| | |
|----------------------|----------------------|
| Plant Height | Medium |
| Canopy Index | 4.95 |
| Branching | Moderate |
| Growth Habit | Indeterminate |
| Flower Colour | White |
| Pubescence Colour | Light Tawny |
| Pod Colour | Brown |
| Hilum Colour | Black |
| Chloride Sensitivity | - |

Disease Ratings



Agronomic Traits

| | |
|------------------------|-------------|
| Emergence | 2 |
| Standability | 3 |
| Shatter Tolerance | 2 |
| Green Stem | 3 |
| Estimated Seed Size | - |
| Protein | High |
| Oil | High |
| Narrow Rows | 1 |
| Wide Rows | 2 |
| Metribuzin Response | Best |
| Sulfentrazone Response | Fair |

Adaptation to Soil Types

| | |
|--------------------------------|-------------|
| Drought Prone | Good |
| High pH* | Good |
| Highly Productive | Fair |
| Moderate/Variable Environments | Good |
| Poorly Drained | Fair |

Diseases and Pests

| | |
|------------------------------------|-----------------|
| Phytophthora Root Rot (PRR) Source | Rps1c |
| Soybean Cyst Nematode (SCN) Races | R3, MR14 |
| (SCN) Source | P188788 |
| Root Knot Nematode (RKN) Incognita | - |

For more information: Visit syngenta.ca, contact our Customer Interaction Centre at 87-SYNGENTA, or follow @NKSeedsCanada on Twitter.

1-9 Scale: 1 = Best, 9 = Worst, (-) = Not Available.

Adaptation and Responses: Best > Good > Fair > Poor.

Protein and Oil: Ultra High > Very High > High > Average > Low.

Canopy Index: Reflects plant height, width and branching. 1 = Smallest, 9 = Largest.

* Represents an assessment of stand establishment, chlorosis severity and yield performance

Performance evaluations are based on field observations and public information. Data from multiple locations and years should be consulted whenever possible. Individual results may vary depending on local growing, soil and weather conditions. IMPORTANT: ALWAYS READ AND FOLLOW SEED BAG/TAG DIRECTIONS. Bayer is a member of Excellence Through Stewardship® (ETS). Bayer products are commercialized in accordance with ETS Product Launch Stewardship Guidance, and in compliance with Bayer's Policy for Commercialization of Biotechnology-Derived Plant Products in Commodity Crops. This product has been approved for import into key export markets with functioning regulatory systems. Any crop or material produced from this product can only be exported to, or used, processed or sold in countries where all necessary regulatory approvals have been granted. It is a violation of national and international law to move material containing biotech traits across boundaries into nations where import is not permitted. Growers should talk to their grain handler or product purchaser to confirm their buying position for this product. Excellence Through Stewardship® is a registered trademark of Excellence Through Stewardship. It is a violation of federal law to use any pesticide product other than in accordance with its labeling. Contact the Pest Management Regulatory Agency with any questions about the approval status of dicamba herbicide products for in-crop use with Roundup Ready 2 Xtend® soybeans. Roundup Ready 2 Xtend® soybeans contain genes that confer tolerance to glyphosate and dicamba. Glyphosate will kill crops that are not tolerant to glyphosate. Dicamba will kill crops that are not tolerant to dicamba. Roundup Ready 2 Xtend® is a registered trademark of Bayer Group. Used under license. Bayer CropScience Inc. is a member of CropLife Canada. Trademarks and service marks are the property of their respective owners. © 2022 Syngenta.