

SOYBEANS



S29-R5X_{BRAND}

RM:
2.9

CHU:
3275

Suitable for 2.7 to 3.1 Maturity with Peking Source of SCN Resistance

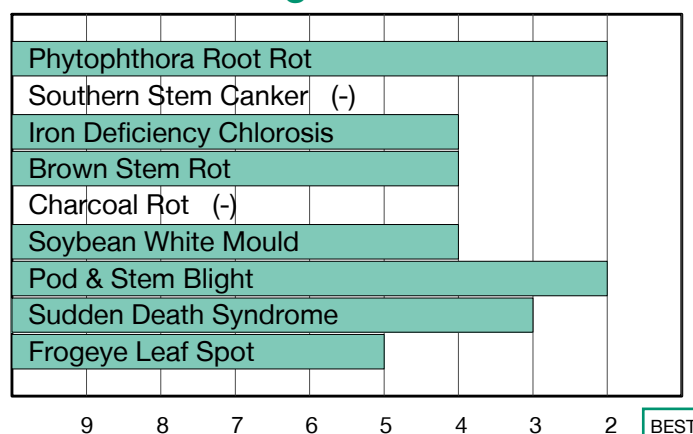


- Excellent speed of emergence and larger plant type for early season establishment
- Outstanding Phytophthora Root Rot field tolerance with Rps1k genetic resistance
- Very strong performance across soil types while maintaining plant height

Plant Characteristics

Plant Height	Medium-Tall
Canopy Index	6.60
Branching	Moderate
Growth Habit	Indeterminate
Flower Colour	Purple
Pubescence Colour	Light Tawny
Pod Colour	Tan
Hilum Colour	Brown
Chloride Sensitivity	Includer

Disease Ratings



Agronomic Traits

Emergence	2
Standability	4
Shatter Tolerance	2
Green Stem	2
Estimated Seed Size	-
Protein	Average
Oil	High
Narrow Rows	3
Wide Rows	1
Metribuzin Response	Best
Sulfentrazone Response	Good

Adaptation to Soil Types

Drought Prone	Good
High pH*	Fair
Highly Productive	Best
Moderate/Variable Environments	Best
Poorly Drained	Best

Diseases and Pests

Phytophthora Root Rot (PRR) Source	Rps1k
Soybean Cyst Nematode (SCN) Races	R1, R3, MR5
(SCN) Source	Peking
Root Knot Nematode (RKN) Incognita	-

For more information: Visit syngenta.ca, contact our Customer Interaction Centre at 87-SYNGENTA, or follow @NKSeedsCanada on Twitter.

1-9 Scale: 1 = Best, 9 = Worst, (-) = Not Available.
Adaptation and Responses: Best > Good > Fair > Poor.

Protein and Oil: Ultra High > Very High > High > Average > Low.
Canopy Index: Reflects plant height, width and branching. 1 = Smallest, 9 = Largest.

* Represents an assessment of stand establishment, chlorosis severity and yield performance

Performance evaluations are based on field observations and public information. Data from multiple locations and years should be consulted whenever possible. Individual results may vary depending on local growing, soil and weather conditions. IMPORTANT: ALWAYS READ AND FOLLOW SEED BAG/TAG DIRECTIONS. Bayer is a member of Excellence Through Stewardship® (ETS). Bayer products are commercialized in accordance with ETS Product Launch Stewardship Guidance, and in compliance with Bayer's Policy for Commercialization of Biotechnology-Derived Plant Products in Commodity Crops. This product has been approved for import into key export markets with functioning regulatory systems. Any crop or material produced from this product can only be exported to, or used, processed or sold in countries where all necessary regulatory approvals have been granted. It is a violation of national and international law to move material containing biotech traits across boundaries into nations where import is not permitted. Growers should talk to their grain handler or product purchaser to confirm their buying position for this product. Excellence Through Stewardship® is a registered trademark of Excellence Through Stewardship. It is a violation of federal law to use any pesticide product other than in accordance with its labeling. Contact the Pest Management Regulatory Agency with any questions about the approval status of dicamba herbicide products for in-crop use with Roundup Ready 2 Xtend® soybeans. Roundup Ready 2 Xtend® soybeans contain genes that confer tolerance to glyphosate and dicamba. Glyphosate will kill crops that are not tolerant to glyphosate. Dicamba will kill crops that are not tolerant to dicamba. Roundup Ready 2 Xtend® is a registered trademark of Bayer Group. Used under license. Bayer CropScience Inc. is a member of CropLife Canada. Trademarks and service marks are the property of their respective owners. © 2022 Syngenta.