

SOYBEANS



S10-R2 BRAND

RM: 1.0
CHU: 2800



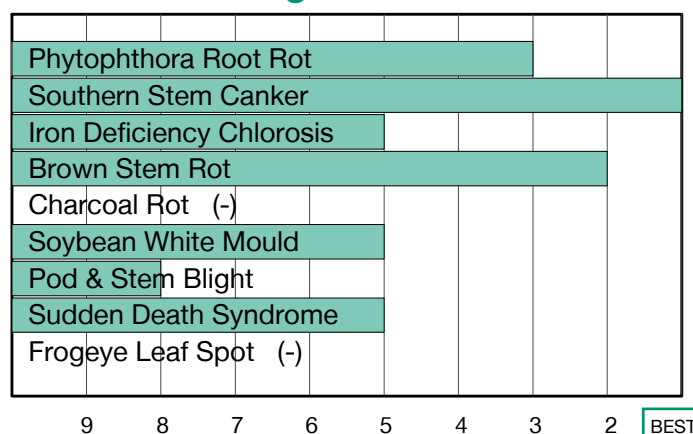
High-yielding Stress-tolerant Soybean with Great Food-grade Qualities

- Tall, bushy plant type that canopies quickly
- Excellent yields on tough acres
- Great root disease package for early-season start

Plant Characteristics

Plant Height	Medium-Tall
Canopy Index	6.60
Branching	Moderate
Growth Habit	Indeterminate
Flower Colour	Purple
Pubescence Colour	Gray
Pod Colour	Tan
Hilum Colour	Yellow
Chloride Sensitivity	Includer

Disease Ratings



Agronomic Traits

Emergence	3
Standability	5
Shatter Tolerance	-
Green Stem	1
Estimated Seed Size	-
Protein	Ultra High
Oil	Average
Narrow Rows	4
Wide Rows	1
Metribuzin Response	Best
Sulfentrazone Response	Best

Adaptation to Soil Types

Drought Prone	Good
High pH*	Poor
Highly Productive	Fair
Moderate/Variable Environments	Good
Poorly Drained	Best

Diseases and Pests

Phytophthora Root Rot (PRR) Source	S
Soybean Cyst Nematode (SCN) Races	R3
(SCN) Source	PI88788
Root Knot Nematode (RKN) Incognita	-

For more information: Visit syngenta.ca, contact our Customer Interaction Centre at 87-SYNGENTA, or follow @NKSeedsCanada on Twitter.

1-9 Scale: 1 = Best, 9 = Worst, (-) = Not Available.
Adaptation and Responses: Best > Good > Fair > Poor.

Protein and Oil: Ultra High > Very High > High > Average > Low.
Canopy Index: Reflects plant height, width and branching. 1 = Smallest, 9 = Largest.

* Represents an assessment of stand establishment, chlorosis severity and yield performance

Performance evaluations are based on field observations and public information. Data from multiple locations and years should be consulted whenever possible. Individual results may vary depending on local growing, soil and weather conditions. IMPORTANT: ALWAYS READ AND FOLLOW SEED BAG/TAG DIRECTIONS.

Trademarks and service marks are the property of their respective owners. © 2022 Syngenta.