

# SOYBEANS

## S007-Y4

RM:  
0.05

CHU:  
2350



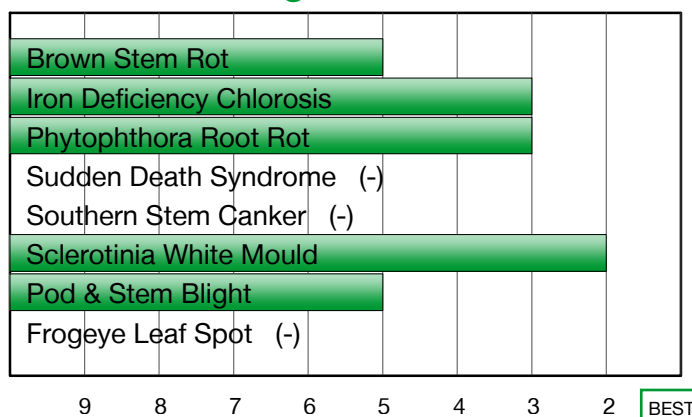
### PROVEN YIELD PERFORMER WITH BROAD ADAPTATION

- Excellent standability for ease of harvest
- Strong Phytophthora Root Rot field tolerance with the Rps1c gene
- Solid emergence with excellent Sclerotinia White Mould tolerance

### Plant Characteristics

Plant Height	<b>Medium-Short</b>
Canopy/Plant Type	<b>Medium</b>
Branching	<b>Moderate</b>
Growth Habit	<b>Indeterminate</b>
Flower Colour	<b>Purple</b>
Pubescence Colour	<b>Light Tawny</b>
Pod Colour	<b>Tan</b>
Hilum Colour	<b>Imperfect Yellow</b>

### Disease Ratings



### Agronomic Traits

Emergence	<b>3</b>
Standability	<b>2</b>
Shatter Tolerance	<b>4</b>
Green Stem	<b>2</b>
Estimated Seed Size	<b>Medium</b>
Avg. Protein %	-
Avg. Oil %	-
Narrow Rows	<b>2</b>
Wide Rows	<b>2</b>

### Adaptation to Soil Types

Drought Prone	●
High pH*	●
Highly Productive	★
Moderate/Variable Environments	★
Poorly Drained	●

### Diseases and Pests

Phytophthora Root Rot (PRR) Source	<b>Rps1c</b>
Soybean Cyst Nematode (SCN) Races	<b>S</b>
(SCN) Source	-

For more information: Visit Syngenta.ca, contact our Customer Interaction Centre at 1-87-SYNGENTA, or follow @SyngentaCanada on Twitter.



Performance evaluations are based on field observations and public information. Data from multiple locations and years should be consulted whenever possible. Individual results may vary depending on local growing, soil and weather conditions.

Monsanto Company is a member of Excellence Through Stewardship® (ETS). Monsanto products are commercialized in accordance with ETS Product Launch Stewardship Guidance, and in compliance with Monsanto's Policy for Commercialization of Biotechnology-Derived Plant Products in Commodity Crops. This product has been approved for import into key export markets with functioning regulatory systems. Any crop or material produced from this product can only be exported to, or used, processed or sold in countries where all necessary regulatory approvals have been granted. It is a violation of national and international law to move material containing biotech traits across boundaries into nations where import is not permitted. Growers should talk to their grain handler or product purchaser to confirm their buying position for this product. Excellence Through Stewardship® is a registered trademark of Excellence Through Stewardship. Always read and follow label directions. The Alliance Frame and Syngenta logo are trademarks of a Syngenta Group Company. Genuity®, Genuity and Design®, Genuity Icons, and Roundup Ready 2 Yield® are registered trademarks of Monsanto Technology LLC used under license. ©2018 Syngenta.

1-9 Scale: 1 = Best, 9 = Worst, (-) = Not Available, NA = Not Applicable.

Icon Scale: ★ Best Choice ● Good Choice ▼ Average to Slightly Below Average ✗ Not Recommended

\* Represents an assessment of stand establishment, chlorosis severity and yield performance

Published 08 June 2018. For use until 01 July 2019.